

The Quilter's Quilters

How To's !

Applying a Mitred Binding to your Quilt

Now that you have quilted your quilt, the next step is to sew your binding on. Unless you have a scalloped border you really only need to use a binding cut on the straight and not on the bias.

How Much Fabric to buy?

Measure the perimeter of your quilt and add about 15" to allow for corners and over lapping. Then divide that figure by 40 (this is the usual width of patchwork fabric). This gives you the number of strips you will need to cut. Multiply this figure by the width of binding strips, I always cut my strips at 2.5". This gives you the amount of fabric you need.

Eg I have a quilt who's perimeter = 150" and I will cut my strips at 2.5"

$$150 + 15(\text{extra allowance}) = 165"$$

$$165 \div 40 = 4.125 \text{ I always round up so I will need to cut 5 strips}$$

$$5 \times 2.5 = 12.5" \text{ this is the amount of fabric I will need to buy.}$$

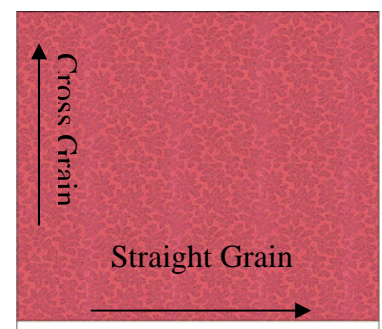
Preparing your binding.

Bindings are best cut on the cross grain of the fabric as that little bit of stretch makes it easier to bind.

Cut the required number of strips you have calculated in the previous steps.

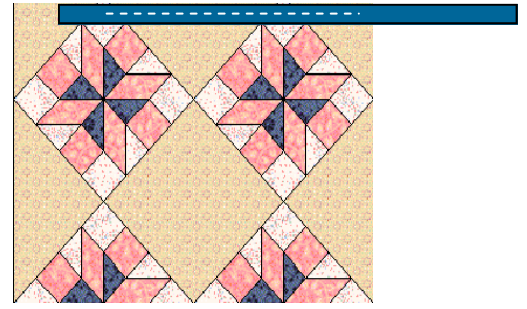
Join the strips end to end to form one long length of binding. Fold in half lengthwise and press.

Selvage →

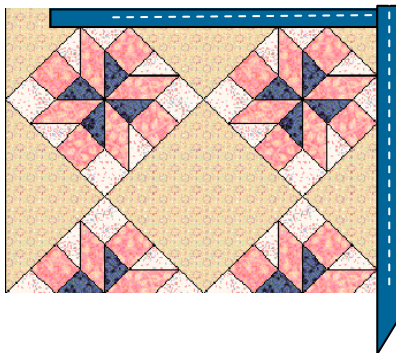
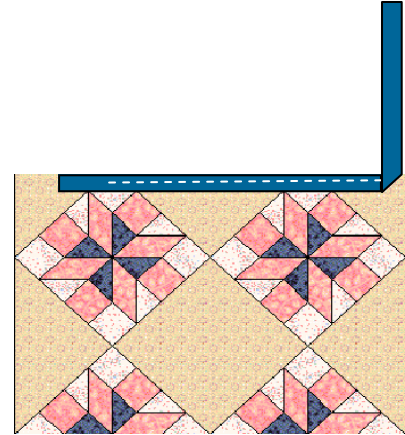


Attaching your binding to your quilt

1. Start about 10" in from the corner of the quilt. Line up the raw edges of the binding and the quilt.
2. Leave approximately a 3" tail at the start of binding unsewn as you will sew this when you finish working around the quilt.
3. Start sewing the binding to the quilt (don't forget to leave the 3" at the beginning) using a $\frac{1}{4}$ " seam allowance.
4. Stop sewing before you reach the corner of the quilt, ending a $\frac{1}{4}$ " from the edge, Back stitch, cut threads and remove quilt from the machine



5. Fold the binding straight up away from the corner forming a 45-degree angle on its lower edge.



6. Bring the binding back down in line with the next edge to be sewn leaving the top of the fold flush with the edge of the quilt top behind it. The 45-degree angle should be intact under the fold.

7. Continue this around your quilt until you get to about 4" from your start point.

8. Trim excess binding, leaving a tail that is long enough to overlap the first unsewn tail by about 3". unfold the first tail and fold back the short raw edge. Lay the second tail so it sits in the unfolded first tail. Fold the first tail back down over the second tail and finish stitching the binding down.
9. Fold binding to the back of quilt and hand stitch into place.

